



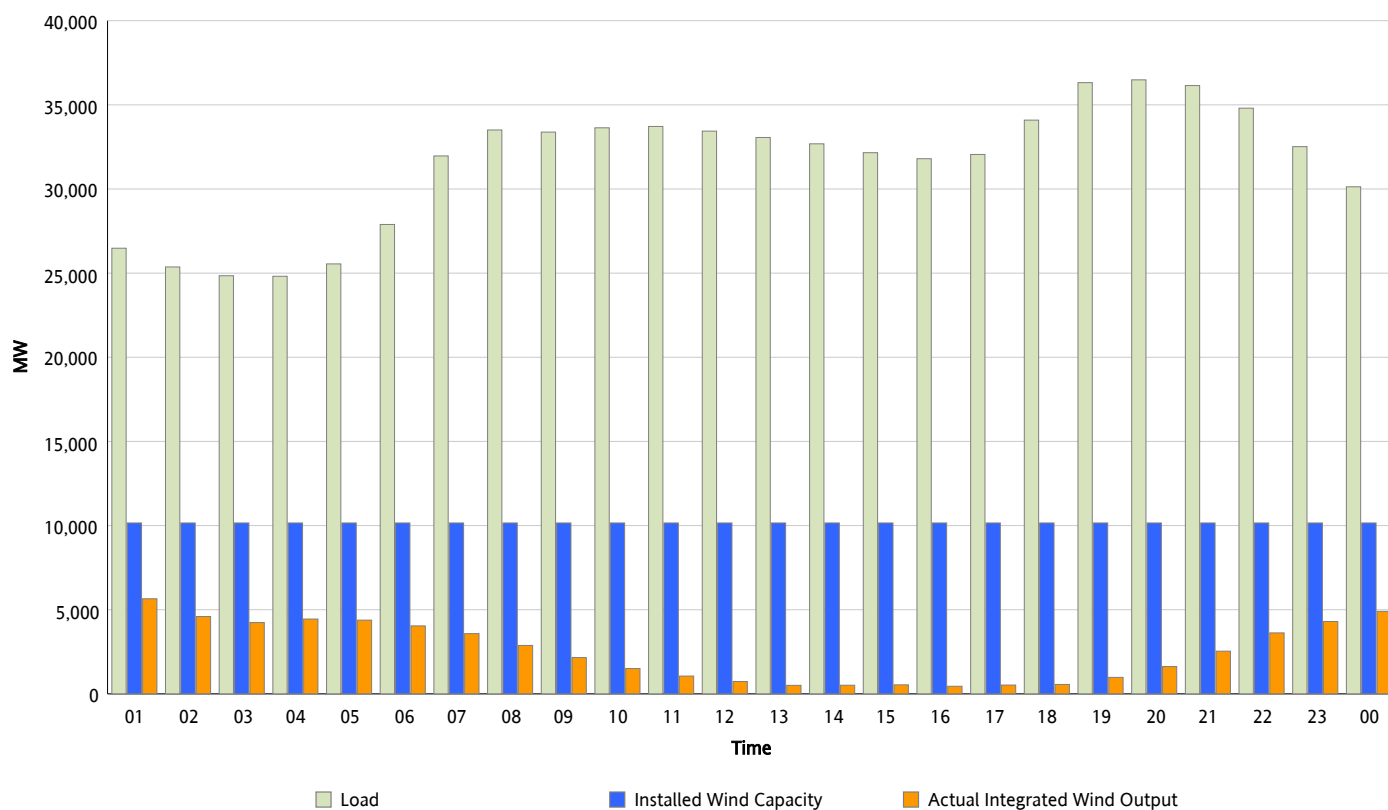
ERCOT Grid Operations

Wind Integration Report : 11/27/2012

Peak Load	36,484 MW
Load Peak Hour (HE)	20
Wind Over Peak	1,622 MW
Wind Record 11/10/12	8,521 MW
Max Wind Value*	5,972 MW
Wind Peak Time	00:00
Wind Integration %	21.93 %

Hourly Average Actual Load vs. Actual Wind Output

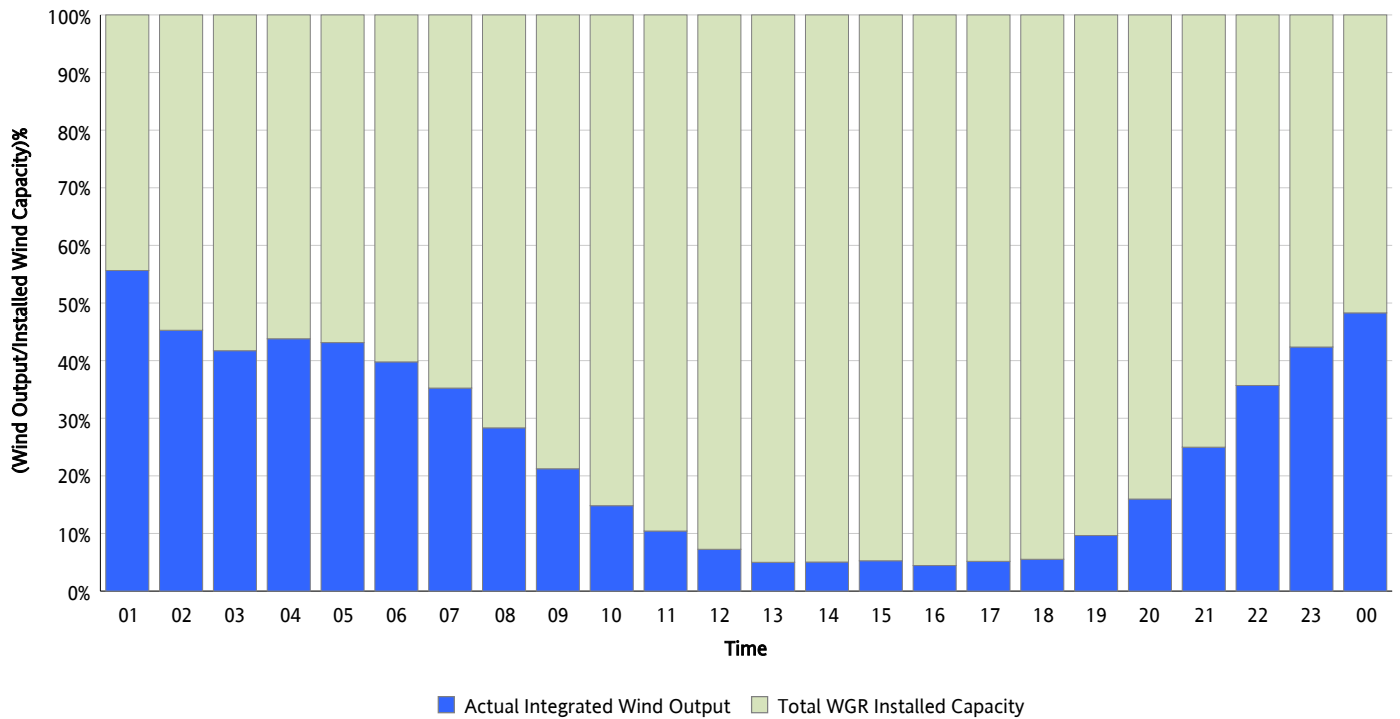
11/27/2012



* Wind Record and Wind Max represent instantaneous values and the rest of the values are integrated over the hour

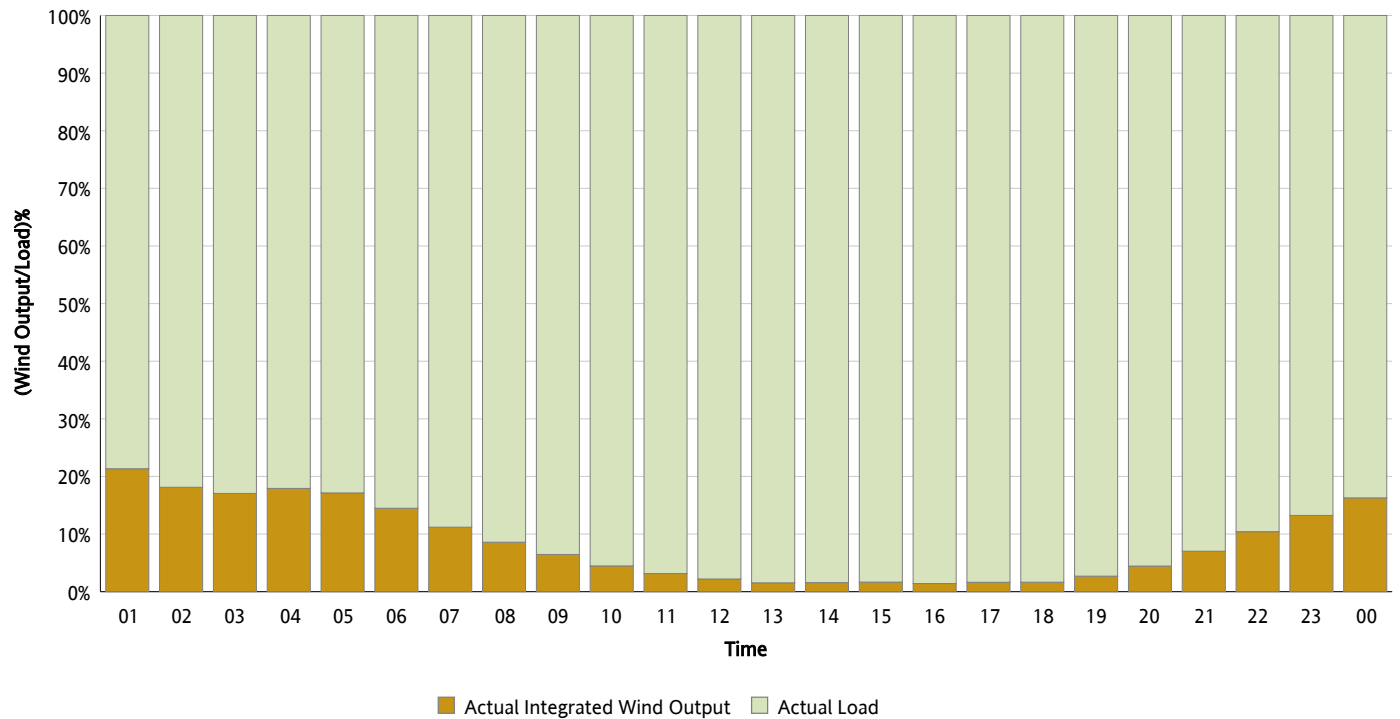
Actual Wind Output as a Percentage of the Total Installed Wind Capacity

11/27/2012



Actual Wind Output as a Percentage of the ERCOT Load

11/27/2012



ERCOT Load vs. Actual Wind Output

11/20/2012 - 11/27/2012

